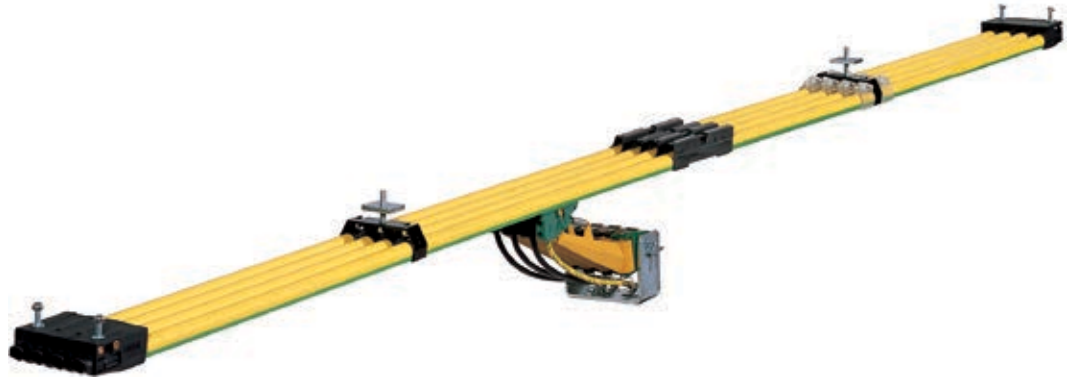


# Conductor Bar Series 811



**CONDUCTIX**  
wampfler  
© DELACHAUX GROUP



**INSTALLATION:**

1. Choose the position of the insulated conductor rails at the already mounted beam.
2. Install the hanger clamps according to the following table:

conductor rail (standard length 4 m)	max. support spacing 'A' (m)	
	electrical overhead* mono rail	crane installation
galvanized steel rail	0.8	1.0
copper rail	0.4 - 0.75	0.8
datametal rail	0.8	1.0

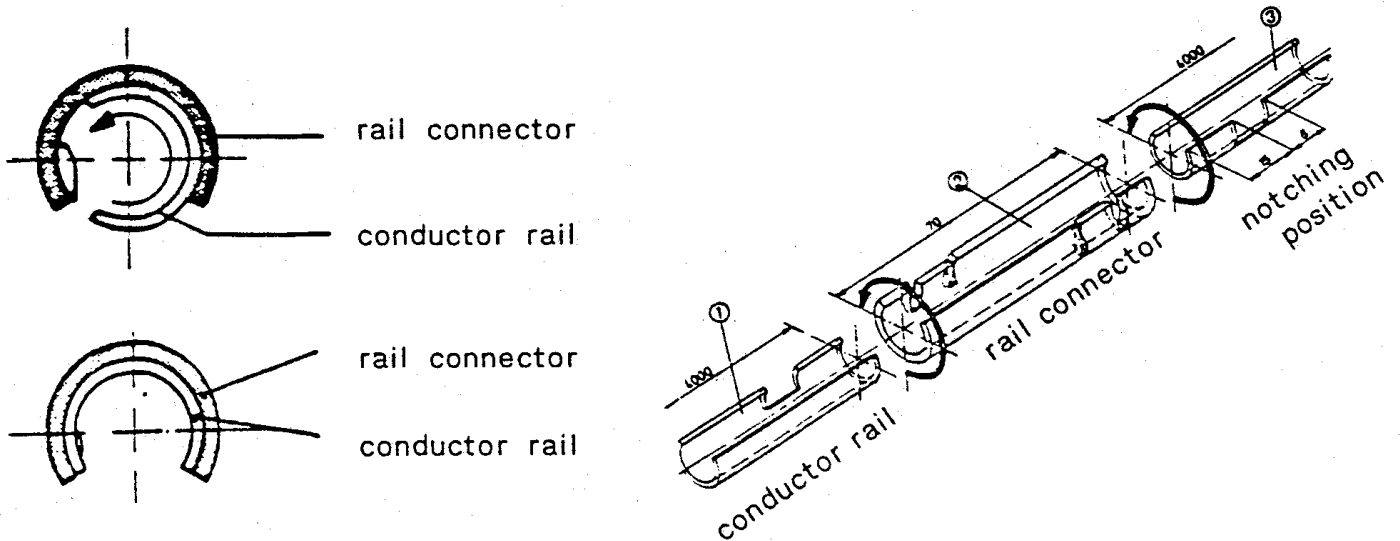
\* = On the curve 0,4 m

The hanger clamps must be installed on the beam at right angles. The last resp. the first hanger clamp should be installed max. 250 mm from the rail end.

3. The length of the conductor rail is 4000 mm. If the conductor rail must be cut off, please note that the insulation cover must generally be 80 mm shorter than the rail.
4. Before mounting the rail sections, please test them for deformations caused by transport or other damages. If the rails ends are not clean please repair them with a triangular scraper or a flat fine file.
5. Clip the rails into the hanger clamps except for the two clamps towards the rail joint.
6. Pull the conductor bar approx. 300 mm out of the insulation cover and push the joint cover over the bar. Then push the rail ends flush together and connect the joint part as shown on the sketch below.

## MOUNTING PROCEDURE:

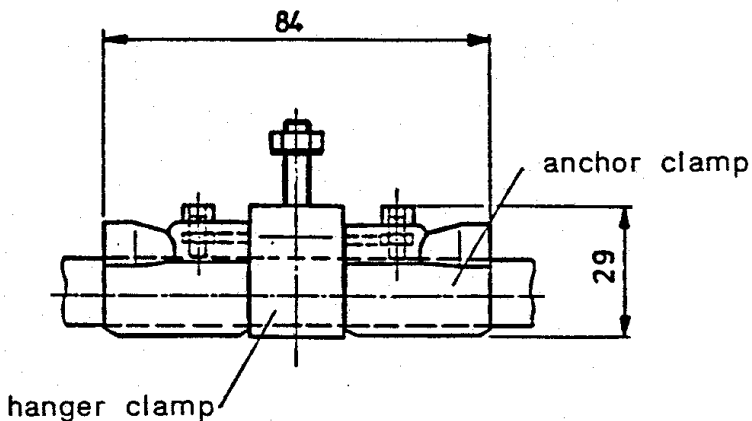
- a) Turn the rail ① (about 90°). Put it into the rail connector ② so that the lug of the connector matches with the gap of the rail. Connect the rail with the joint part ②.
- b) Connect the rail ③ with the rail connector ② in the same way.



Grease the rail ends round the notch with acid-resisting vaseline, if the joint part is very hard to connect with the rail.

Push the connector cover over the rail connector until the lug snaps audibly into the gap of the rail connector. The current collector must be tested for perfect gliding over the joint part.

7. To prevent the moving of conductor rails in sense of length anchor clamps have to be installed.  
 At installations up to a length of 50 m anchor clamps can be installed at every point of the installation. At installations between 50 m and 100 m length the anchor clamps have to be installed at the middle of the installation. At installations with a length of  $\geq 100$  m the anchor clamps have to be mounted according to catalogue 811 programme.



Hint:

The anchor clamp 081153 F is to be fixed by a max. torque of 0.7 to 0.9 Nm!

An anchor clamp is always fitted on the right side of a hanger clamp and another one on the left side. Two anchor clamps form an anchor point for each rail.

8. The power feed is normally mounted at the rail end or at the middle of the system.

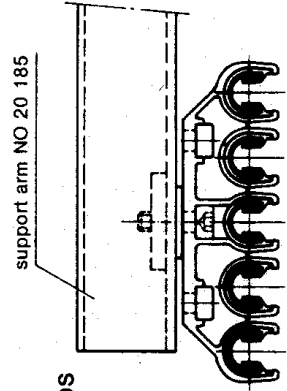
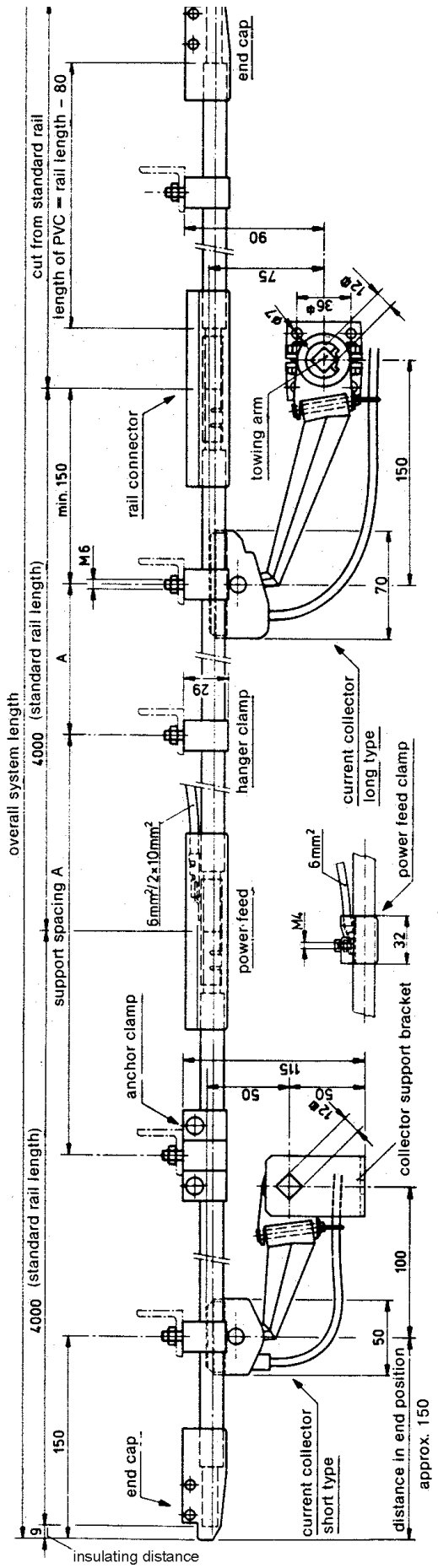
### MOUNTING PROCEDURE

- a) Install the power feed connector in the same way as the rail connector.
  - b) Fasten the connection cables with the crimp tool.
  - c) Push the insulation covers of the connector on to the rail.
9. Install the end caps on the rail ends after mounting the conductor rails.
  10. Install the current collectors according to the enclosed dimension sheet.
  11. Test the system for perfect and smooth gliding of the current collectors in the rails.  
Control that:
    - all rails are parallel
    - all hanger clamps are snapped-in

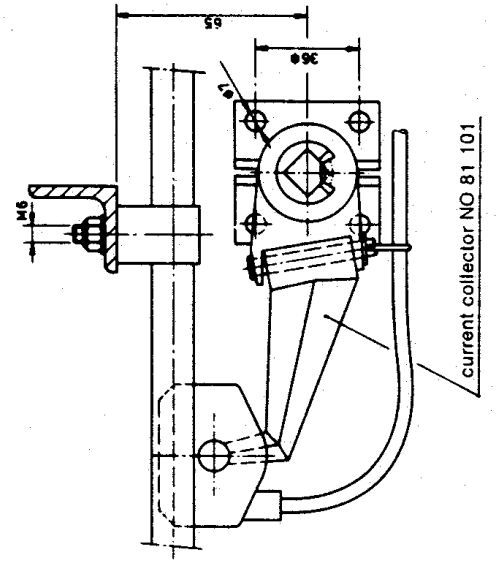
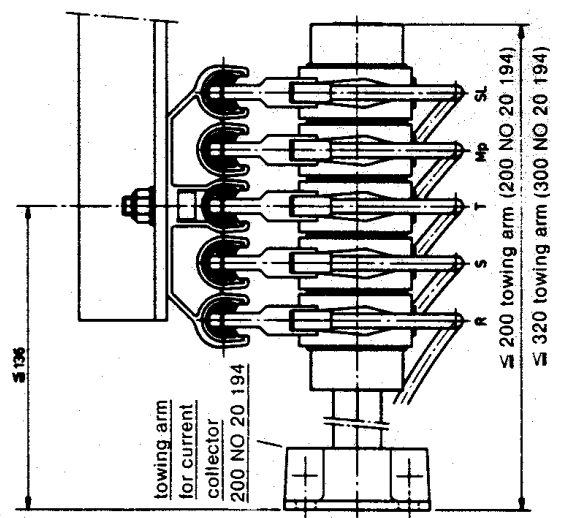
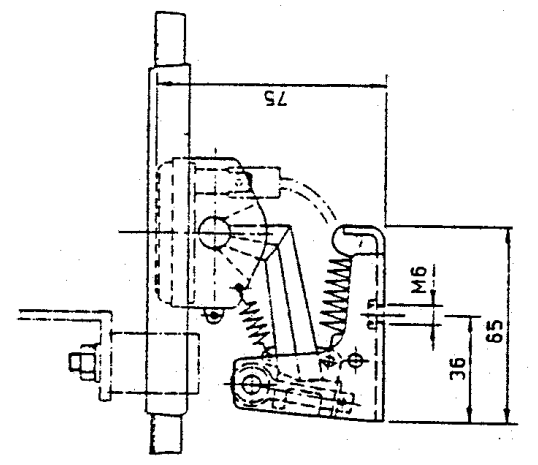
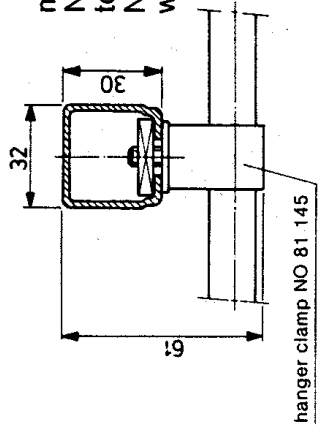
### MAINTENANCE

12. **Please note:**

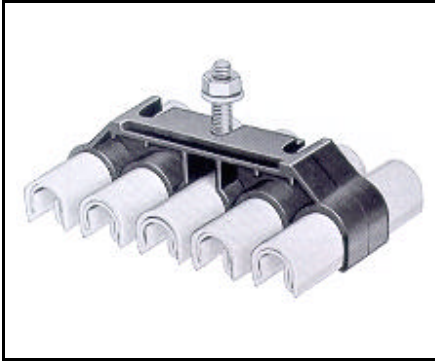
The collector carbons must be replaced by all means if the carbon is worn down to the insulation.



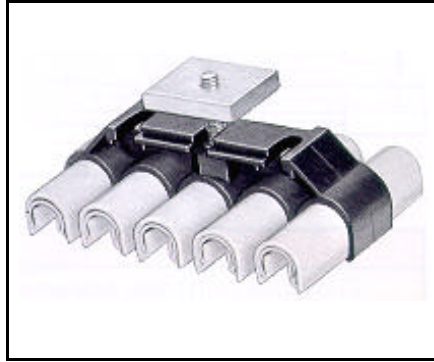
mounting of hanger clamps  
 NO 81 145 parallel to  
 towing arm NO 20 185 or  
 NO 20 186 with  
 washer R 6.6 DIN 440-St.



## Photos of relevant system parts



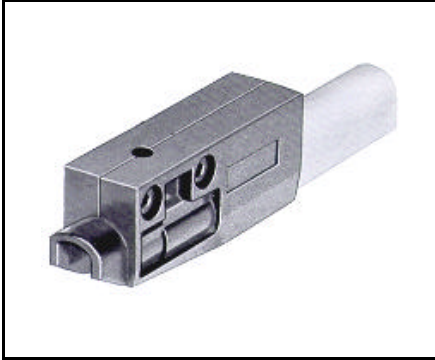
081143-...; Hanger clamp with steel nut; 3, 4, 5 and 6 poles



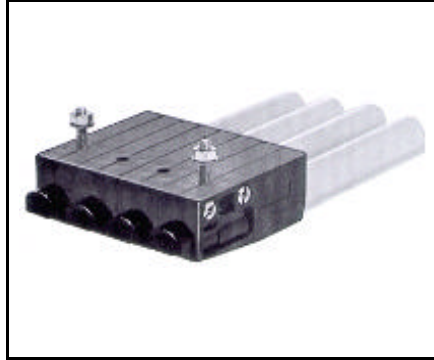
081145-...; Hanger clamp with steel square nut; 3, 4, 5 and 6 poles



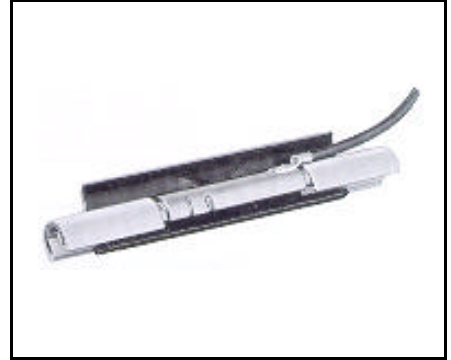
081132; Anchor clamp



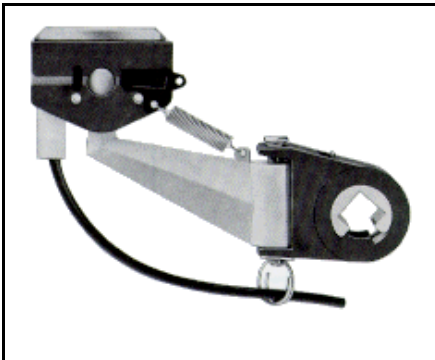
081173-...; End cap; 1 pole



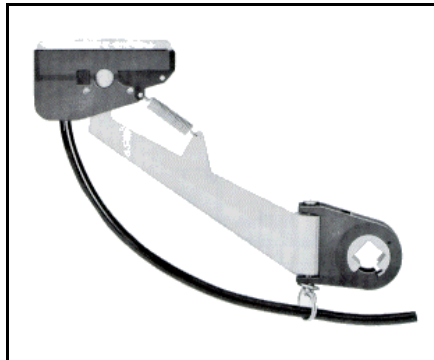
081172-...; End cap; 3, 4, 5 and 6 poles (with and without feed)



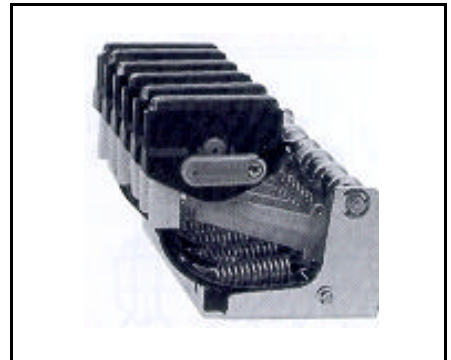
081151-...; Power feed



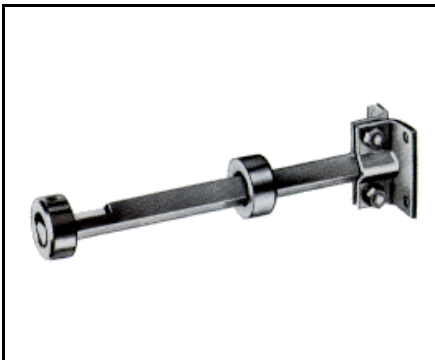
081101-...; Current collector; short type; shoe length 40/63 mm



081102-...; Current collector; long type; shoe length 40/63 mm



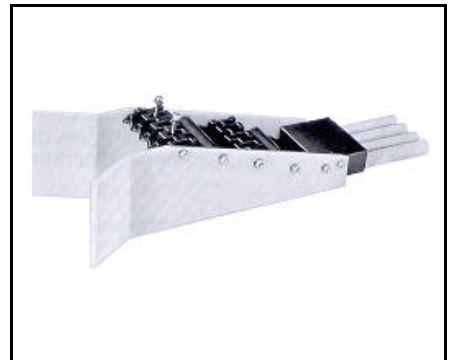
081106-...; Current collector unit; 2, 3, 4, 5 and 6 poles



020194-...; Towing arm for current collectors



081050-...; Support bracket for current collectors



081182-...; Pick-up guide; 2, 3, 4, 5, 6, 7 and 8 poles

## Notes

# www.conductix.us

## USA / LATIN AMERICA

10102 F Street  
Omaha, NE 68127

Customer Support  
Phone +1-800-521-4888

Phone +1-402-339-9300  
Fax +1-402-339-9627

info.us@conductix.com  
latinamerica@conductix.com

## CANADA

1435 Norjohn Court  
Unit 5  
Burlington, ON L7L 0E6

Customer Support  
Phone +1-800-667-2487

Phone +1-450-565-9900  
Fax +1-450-851-8591

info.ca@conductix.com

## MÉXICO

Calle Treviño 983-C  
Zona Centro  
Apodaca, NL México 66600

Customer Support  
Phone (+52 81) 1090 9519  
(+52 81) 1090 9025  
(+52 81) 1090 9013

Fax (+52 81) 1090 9014

info.mx@conductix.com

## BRAZIL

Rua Luiz Pionti, 110  
Vila Progresso  
Itu, São Paulo, Brasil  
CEP: 13313-534

Customer Support  
Phone (+55 11) 4813 7330

Fax (+55 11) 4813 7357

info.br@conductix.com

Contact us for our Global Sales Offices

